



IMAGINE

PERMANENT formwork, FULLY insulated with
a PERMANENT maintenance FREE finish.

ONE product, ONE process and you're DONE.
As simple as 1.2.3.

WHY mess with SIPS, ICF or concrete block
construction when SmartStone has a
COMPLETE thermal 'walkaway' system?

Why spend unnecessary money constructing a structural wall, that has NO insulation, or NO external decorative or weathering cover when SmartStone Systems offers a very real and cost efficient solution?

IMAGINE having a complete structural wall finished in the same time it takes to construct a concrete block, SIPS or ICF wall? Imagine that it also has an incredible thermal insulation value of R-4.0 (USA/Canada R-28) in the same process. Sound too good to be true? Imagine a maintenance free real stone finish completed in the same process. While the ICF block, SIPS or concrete block contractors still have to have their walls faced the SmartStone Systems contractors would be long gone. That translates to real MONEY savings. SIMPLE. One product, ONE installation and ONE cost, Lets face it, concrete block stand alone has very little insulation value whatsoever. It also needs to be finished for weatherproofing and decorative purposes. That is 4 EXTRA costs, not just 2 extra materials, but 2 extra labour costs. ICF does have an insulation value but still requires external finishing. That is an EXTRA cost. What choice would you make? The SIMPLE one? The SMART one? Will it be using SmartStone Systems?

*the latest in smart wall
building methods*



Prototype construction of SmartStone Systems patented structural wall system.

Permanent formwork with a permanent zero maintenance exterior in just one easy step.

Almost as easy as Lego. Fully insulated high density insulation and totally waterproof.

Insulation thermal value of R-4 with fantastic sound retention. (2 x insulation plus solid mass)

Available in various lightweight natural stone and porcelain finishes.

Just add windows and doors, electrics, plumbing, gyprock and you are done.



real stone

real smart

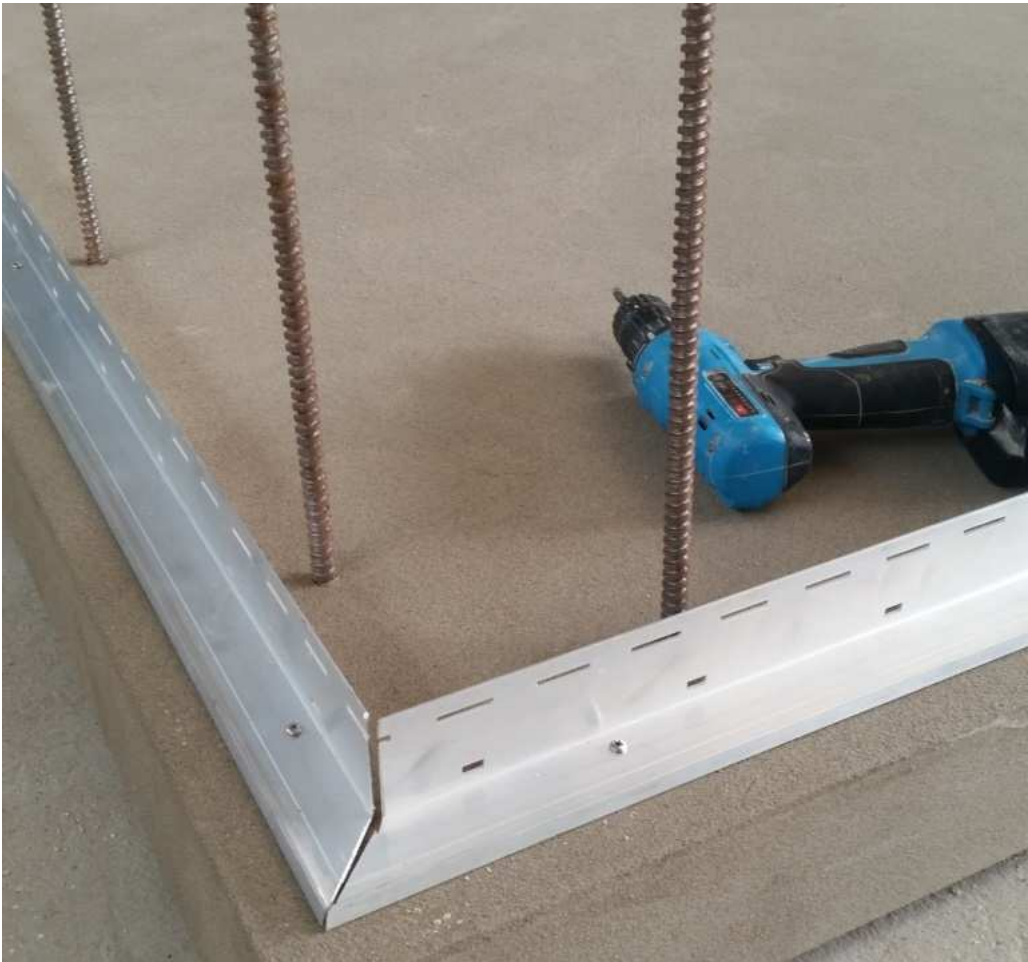
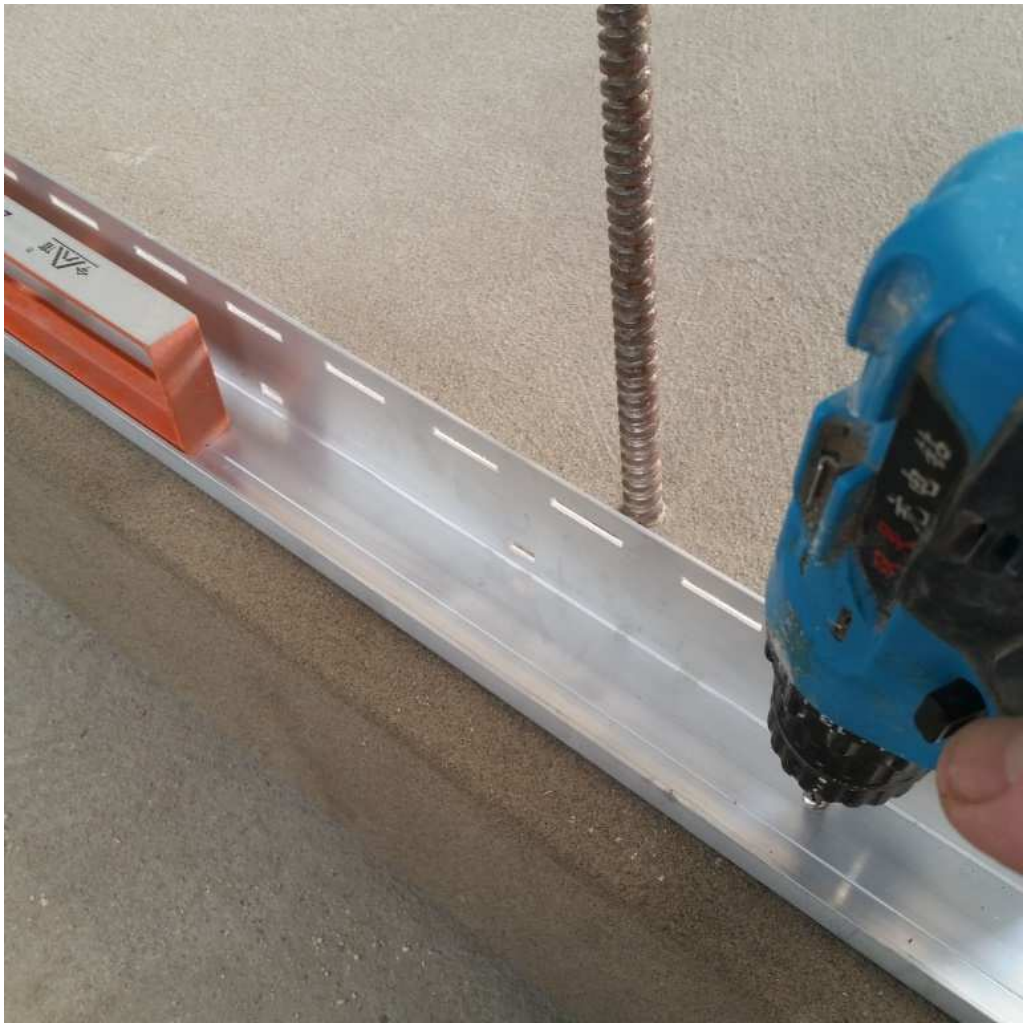
Note : The following is a quick presentation of sequential pictures. For testing purposes the wall was done with CNC aluminium brackets with our standard cladding PVC joiner tongues. We will utilize just one PVC moulded profile in the future when die is completed. All the joints were sealed inside with a silicone sealant as each piece was installed. One tube of sealant for 1 sq metre of both internal and external wall sections. (2 sq metres total)



Slab or foundation footing with re-bar

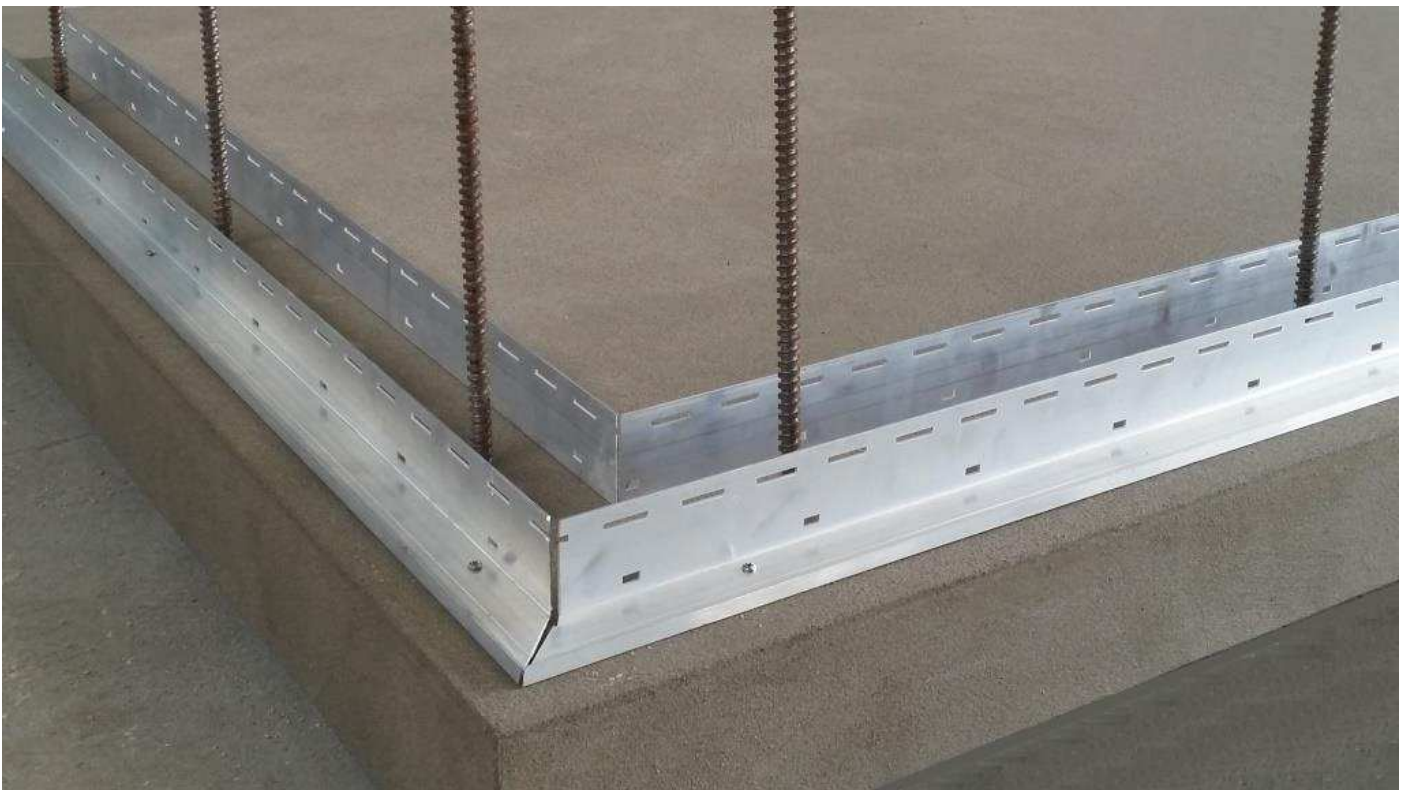


Outer starter rail set level and plumb, screwed and glued into place.





Internal rails fixed squarely and level





Start with a corner block, apply sealant to rail as shown. Set block in place.





Double check for level both ways





Place bracket into end groove aligned with PVC joiner



Apply sealant along and adjacent to joiner



Apply sealant to the bottom rail.



Position the next stone into place onto alignment grooves.



Repeat same with silicone sealant on end of block and rail



Place next block into positon



This is how it is looking so far ready for internal course.



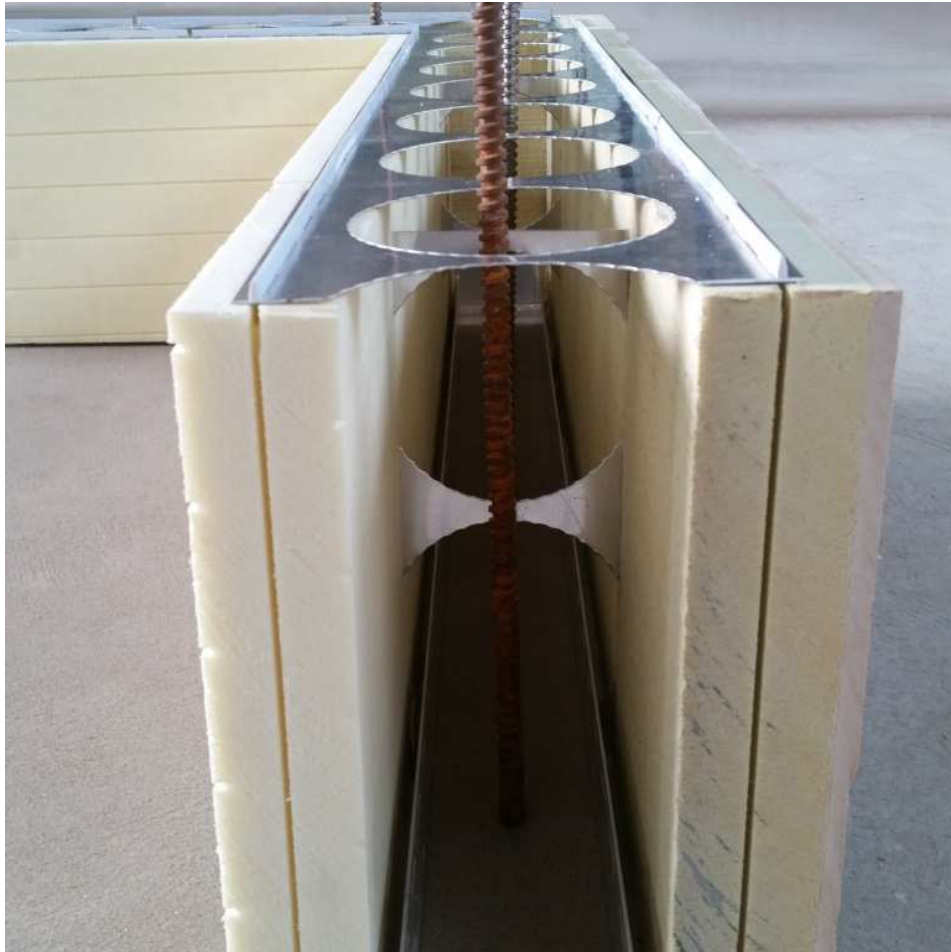
Essentially follow the same procedure as the external course.



The brackets can all be set in place with the alignment joiners



Internal wall view



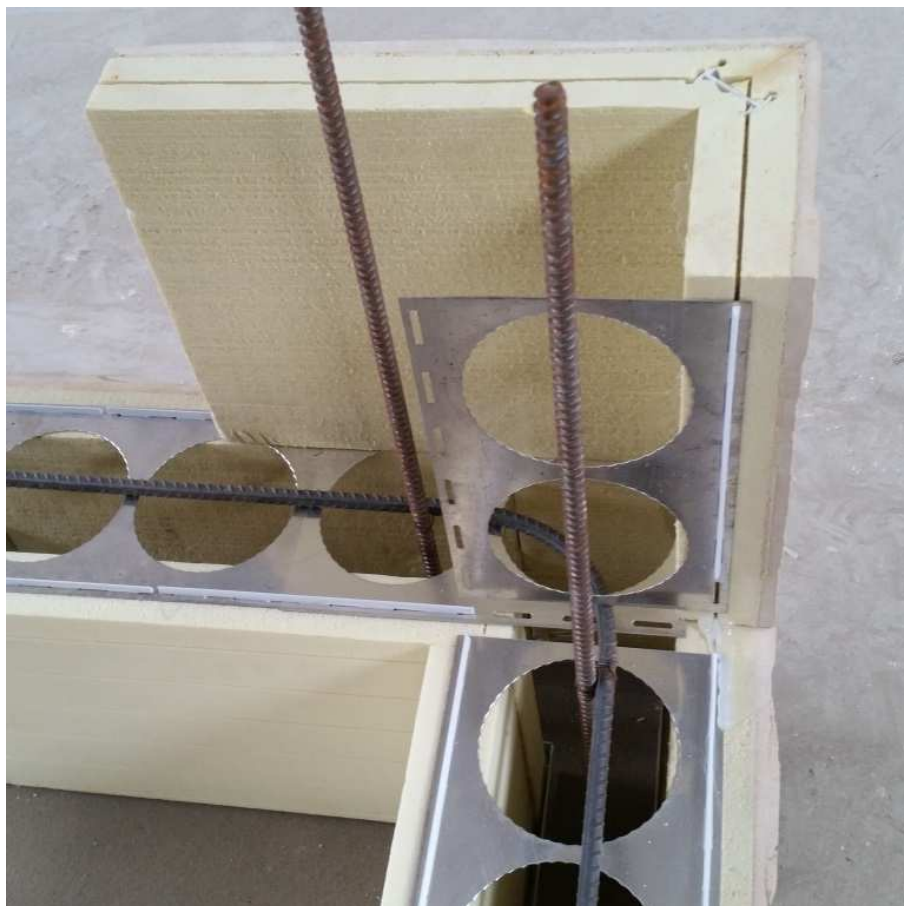
End view



Check for level before commencing second course.



Set horizontal re-bar and tie to vertical starter bars



Start again at the corner following same procedure as first.







End of second course.





Tie re-bar extensions and continue installing required courses.



1 man hour should net completion of 1 sq metre of both walls.



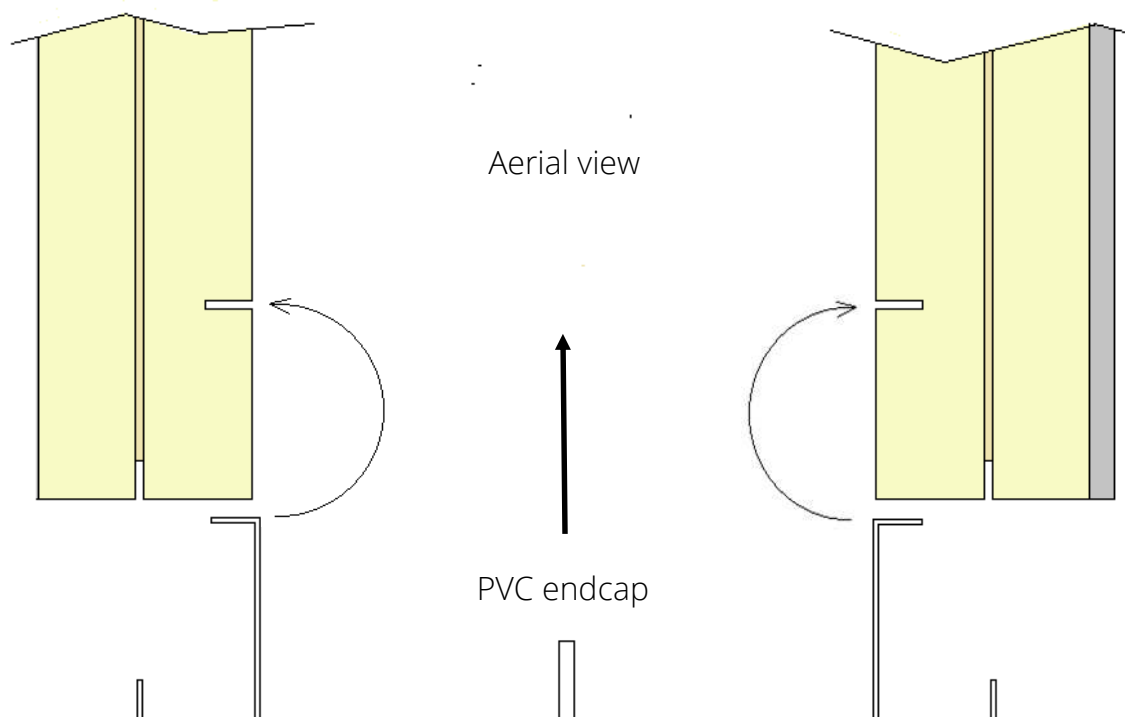
Internal wall at 4 courses.



The cavity before closing up for concrete pour.



End capping for window and door openings. These also lock into the alignment grooves keeping the walls straight and true. The above are folded metal however PVC endcaps will be produced for a low thermal transfer, ease installation and no corrosion. These will simply clip into a rebate and alignment groove supported also by adhesive sealant.





Internal walls simply drywall, right, for paint or ceramic tile directly over as on left.



It's time... to get real smart.

If you are looking for the perfect affordable one step walling solution then get in touch with SmartStone Systems today.

Get REAL prestige without blowing the construction budget.

Get the ultimate in energy efficiency that's real ECO smart.



Smartstone[®]
systems